

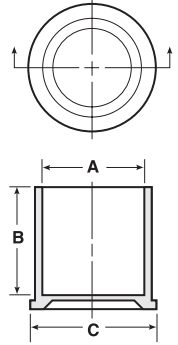
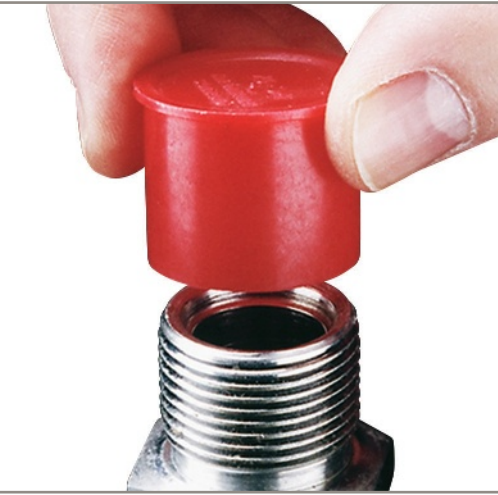
RC Series

Caps for Threaded Connectors

RC Series caps for threaded connectors originated for the automotive and air conditioning industries, but are now suitable for a multitude of applications. The caps can be installed to fit threaded or smooth cylindrical surfaces.

- Straight cap

Material: Low-Density Polyethylene **Color:** Red



Caps for Threaded Connectors **RC Series**

† Has three internal ribs.

Caplugs No.	To Cap Thread Size	Dimensions						Packaging	
		A		B		C		Carton Quantity	Mini Pak Quantity
		In	mm	In	mm	In	mm		
RC-FT-2211 †	5/16	.31	8.00	.84	21.34	.51	12.95	10000	2000
RC-6	3/8	.37	9.50	.47	11.94	.60	15.24	5000	1000
RC-FT-2210 †	3/8	.37	9.58	.84	21.34	.58	14.73	7500	1500
RC-7	7/16	.42	10.74	.59	14.99	.57	14.48	5000	1000
RC-M12	12mm	.47	11.99	.47	11.94	.70	17.78	5000	1000
RC-8	1/2	.49	12.67	.55	13.97	.73	18.54	5000	1000
RC-FT-2097	M14	.53	13.59	.81	20.57	.69	17.53	5000	1000
RC-9	9/16	.56	14.25	.48	12.19	.79	20.07	5000	1000
RC-10	5/8	.61	15.49	.84	21.34	.76	19.30	5000	1000
RC-FT-220	5/8	.61	15.52	.88	22.35	.75	19.05	5000	1000
RC-11	11/16	.66	16.97	.84	21.34	.83	21.08	5000	1000
RC-11-7	11/16	.67	17.12	.47	11.94	.92	23.37	5000	1000
RC-11A	-	.67	17.22	.88	22.35	.84	21.34	4500	900
RC-M18	18mm	.69	17.75	1.00	25.40	.93	23.62	3000	600
RC-12	3/4	.73	18.67	.88	22.35	.90	22.86	5000	1000
RC-12-10	3/4	.73	18.75	.65	16.51	.98	24.89	5000	1000
RC-13	13/16	.81	20.60	.56	14.22	1.04	26.42	5000	1000
RC-14	7/8	.86	21.84	.84	21.34	1.02	25.91	5000	1000
RC-14-12	7/8	.86	21.84	.75	19.05	1.11	28.19	4000	800
RC-15	-	.93	23.62	.88	22.35	1.25	31.75	2000	400
RC-FT-201	7/8	.86	22.00	.88	22.35	1.03	26.16	2500	500
RC-16	1	.99	25.35	.65	16.51	1.23	31.24	3000	600
RC-17	1-1/16	1.04	26.59	.89	22.61	1.21	30.73	2500	500
RC-FT-448-1	1-1/16	1.04	26.62	1.12	28.45	1.22	30.99	1000	200
RC-19	1-3/16	1.18	30.12	.77	19.56	1.42	36.07	2000	400
RC-21	1-5/16	1.31	33.30	.90	22.86	1.54	39.12	1000	200
RC-21-11	1-5/16	1.31	33.32	.66	16.76	1.53	38.86	2500	500
RC-23	1-7/16	1.43	36.47	.70	17.78	1.67	42.42	1000	200
RC-25	1 9/16	1.53	38.86	.48	12.19	1.71	43.43	3000	600
RC-26	1-5/8	1.63	41.45	.95	24.13	1.86	47.24	1000	200
RC-27	1-11/16	1.68	42.82	.70	17.78	1.92	48.77	1000	200
RC-30	1-7/8	1.88	47.83	1.08	27.43	2.12	53.85	800	160
RC-40	2-1/2	2.50	63.70	1.30	33.02	2.75	69.85	400	80
RC-56	3-1/2	3.50	88.90	1.34	34.04	4.09	103.89	250	50